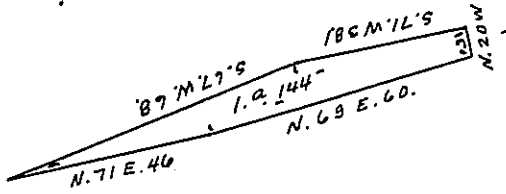


Down the N.E. Branch of Susquehanna -



The Dft. of an Island Situate in the N.E. Branch of Susquehanna - being the first above the mouth of Fishing Creek in Catwissa Township Columbia County opposite Jacob Shuman and opposite to lands of Abraham Whitmer and others about forty perches from the ~~west~~ Suther Shore and about Eighty perches from the Northern Shore of Said River. Call'd Shermans Island. Containing one acre and forty four perches Strict Measure. Surveyed to Jacob Sherman on the 14th November 1815 by Virtue of his Warrant. Dated the 28th October 1815.

Richard T. Leech Esq.
Surveyor General

Thos Woodside D.S.

IN TESTIMONY that the above is a copy of the original remaining on file in the Department of Internal Affairs of Pennsylvania, made conformably to an Act of Assembly approved the 16th day of February 1833, I have hereunto set my hand and caused the Seal of said Department to be affixed at Harrisburg, this twenty first day of January 1907.

Geo. P. Brown
Secretary of Internal Affairs.